

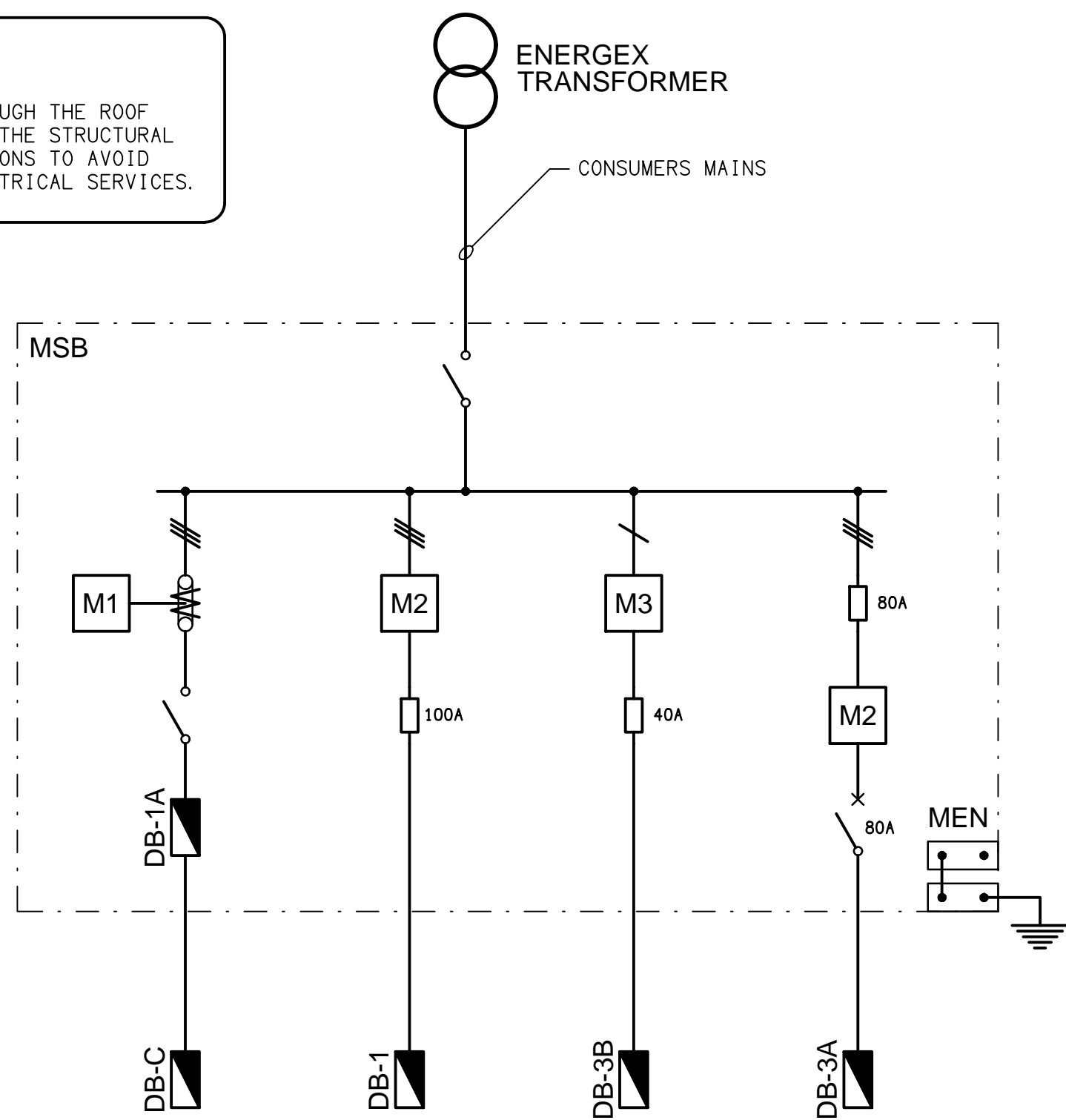
LEGEND

- ELECTRICAL SERVICES SWITCHBOARD.
- SWITCHBOARD / CONTROL PANEL NOT PROVIDED AS PART OF THE ELECTRICAL SUBCONTRACT.
- SINGLE 10A POWER OUTLET.
- SINGLE 15A IP66 POWER OUTLET.
- DOUBLE 10A POWER OUTLET.
- 20A IP66 3-PHASE POWER OUTLET.
- SINGLE PHASE ISOLATOR.
- THREE PHASE ISOLATOR.
- LIGHTING CONTROL SWITCH PANEL.
- LIGHTING PRESENCE DETECTOR.
- ONE-WAY LIGHT SWITCH.
- IP66 ONE-WAY LIGHT SWITCH.
- CIRCUIT LINE.
- SWITCH LINE.

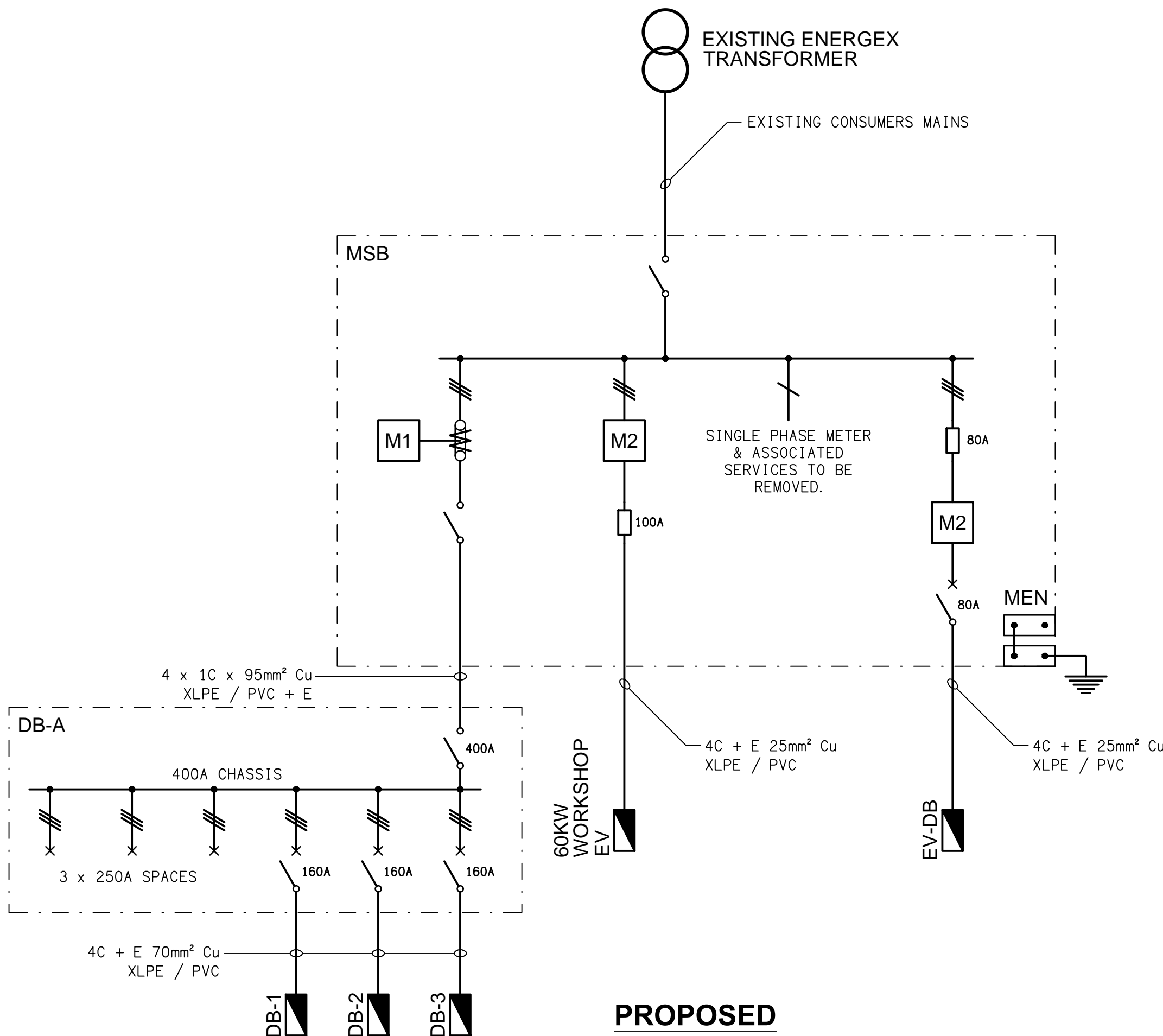
- POWER CIRCUIT DESIGNATION. DENOTES DB AND CIRCUIT.
- LIGHTING CONTROL CHANNEL REFERENCE.
- ELECTRICAL EQUIPMENT AS NOTED.
- FUTURE EV CONDUIT ACCESS.
- EXISTING CT METER TO REMAIN.
- EXISTING WHOLE CURRENT METER TO REMAIN.
- EXISTING SINGLE PHASE WHOLE CURRENT METER TO BE REMOVED.
- FUSE.
- SINGLE PHASE.
- THREE PHASE.
- CURRENT TRANSFORMER C/W REMOVABLE LINK.
- FUSE LINK.
- CIRCUIT BREAKER.
- ISOLATOR.
- E1: RECESSED EMERGENCY LIGHT.
- E2: JUMBO EMERGENCY EXIT LIGHT.
- EX: EMERGENCY EXIT LIGHT.
- F1: 5000 DIA CEILING FAN.
- L1: 1200 LONG WALL MOUNTED BATTEN.
- L2: 1200 LONG SURFACE BATTEN C/W EMERGENCY PACK.
- L3: HIGH BAY FITTING.
- L4: RECESSED DOWNLIGHT.
- L5: 600 x 600 SURFACE MOUNTED LED FLAT PANEL.

NOTE

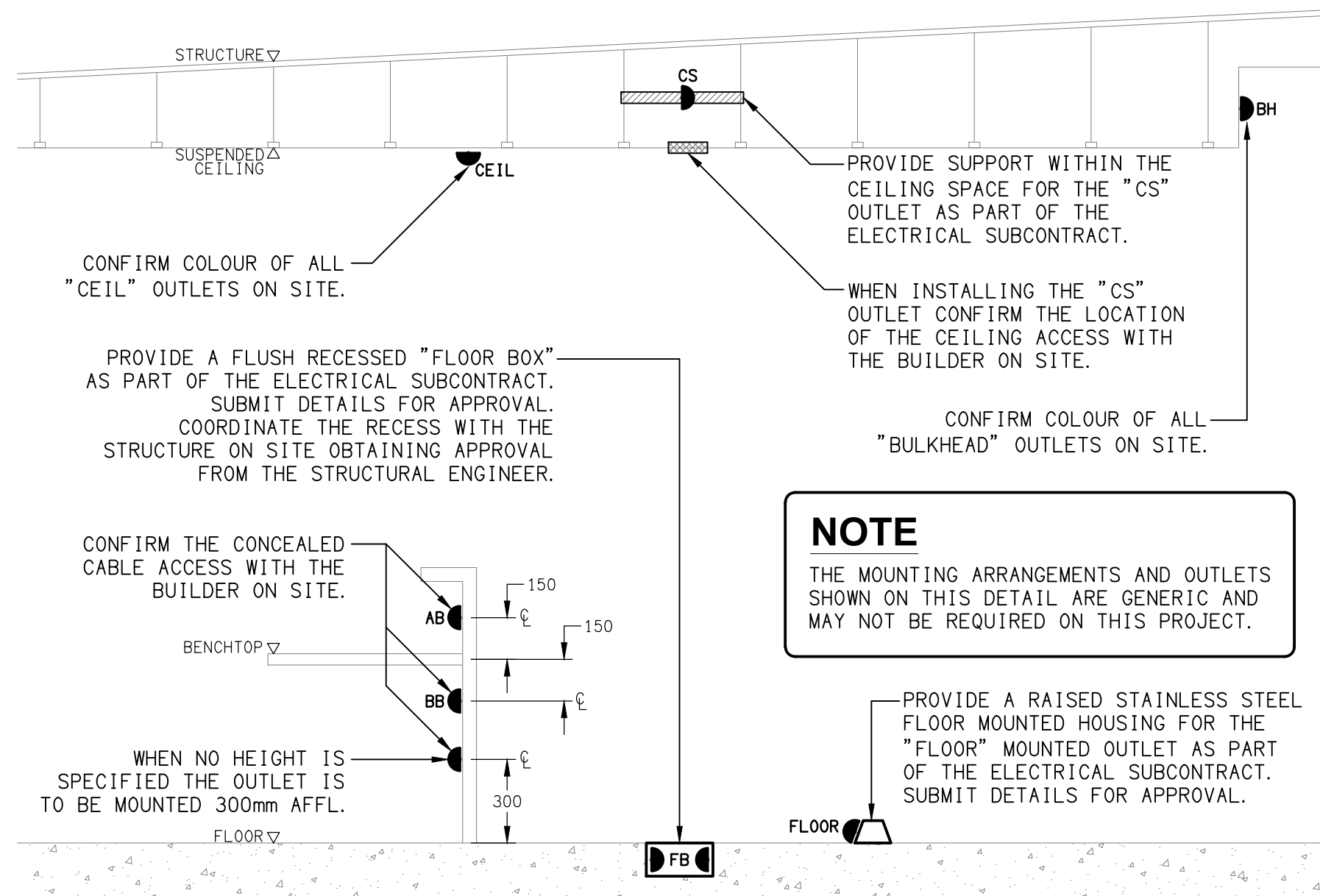
ALL ELECTRICAL PENETRATIONS THROUGH THE ROOF SHEETING ARE TO BE IN LINE WITH THE STRUCTURAL OR MECHANICAL SERVICES PENETRATIONS TO AVOID DEDICATED FLASHINGS FOR THE ELECTRICAL SERVICES.



**EXISTING
POWER SCHEMATIC**
NOT TO SCALE



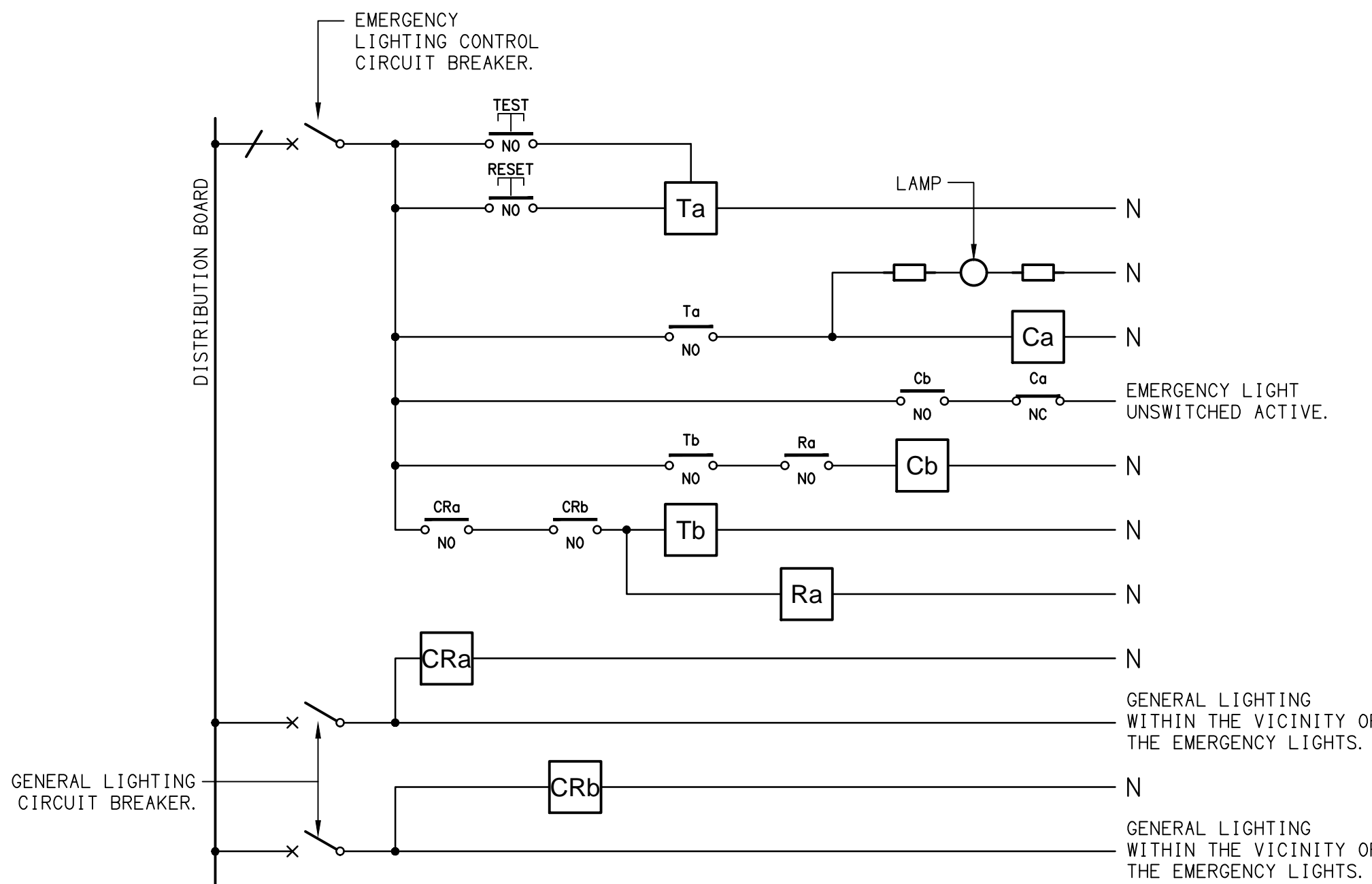
**PROPOSED
POWER SCHEMATIC**
NOT TO SCALE



**DETAIL
TYPICAL OUTLET MOUNTINGS**
NOT TO SCALE

EQUIPMENT:

- TEST - TEST PUSH BUTTON MOUNTED ON THE DISTRIBUTION BOARD ESCUTCHEON.
- RESET - RESET PUSH BUTTON MOUNTED ON THE DISTRIBUTION BOARD ESCUTCHEON.
- LAMP - AMBER TEST INDICATING LAMP MOUNTED ON THE DISTRIBUTION BOARD ESCUTCHEON.
- Ta - ADJUSTABLE 0-3 HOUR TIMED RELAY.
- Tb - 15 MINUTE RUN-ON TIMER TO OPERATE UPON THE RETURN OF MAINS POWER.
- Cx - CONTACTOR x.
- CRx - CONTROL RELAY x.
- Rx - RELAY x.



NOTES

- THE EMERGENCY LIGHT UNSWITCHED ACTIVE / GENERAL LIGHTING SWITCHED ACTIVE CIRCUIT ARRANGEMENT AND CONTROL IS TYPICAL FOR ALL CIRCUITS SUPPLYING EMERGENCY LIGHTS.
- PROVIDE ADDITIONAL CONTROL RELAYS (CRx) CONFIGURED AS PER CRa AND CRb FOR ALL ADDITIONAL LIGHTING CIRCUITS THAT SUPPLY LIGHTS IN THE VICINITY OF THE EMERGENCY LIGHTS.

ELECTRICAL DESIGN GROUP BRISBANE
PTY LTD
ACN 092 710 793

TRADING AS:
ELECTRICAL DESIGN GROUP

THE COPYRIGHT OF THIS DRAWING
REMAINS THE PROPERTY OF THE
ELECTRICAL DESIGN GROUP.

USE FIGURED DIMENSIONS
IN PREFERENCE TO SCALE.

ALL DIMENSIONS TO BE
VERIFIED ONSITE.

ELECTRICAL DESIGN GROUP
ELECTRICAL BUILDING SERVICES CONSULTANTS
BRISBANE GOLD COAST

P.O.Box 15, Sherwood Q.4075
Phone: (07) 3278 4375
Email: brisbane@edg.net.au
Web: www.edg.net.au

PROJECT:
25 SOUTH PINE ROAD, BRENDAL

QUEENSLAND

A TENDER 18/08/2025
REV: DESCRIPTION: DATE:

DRAWING:
**ELECTRICAL SERVICES
LEGEND & DETAILS**

SCALE:
NOT TO SCALE AT A1

PROJECT NO:
C3604a

DRAWING NO:
E01

REVISION:
A